

# Marshal's Office of the Małopolska Region

11th December 2013



Małopolska

**Agata Błahuciak**  
**Secretary of the**  
**Małopolska Region**

# MAŁOPOLSKA

TREASURES OF THE REGION



**12 million** tourists visit us every year!

# Kraków historical centre



# Wieliczka Salt Mine

30 min.

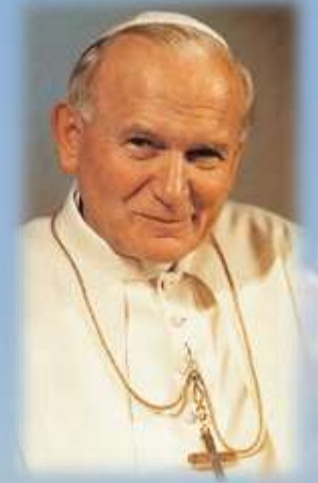


# Auschwitz-Birkenau

1 hour



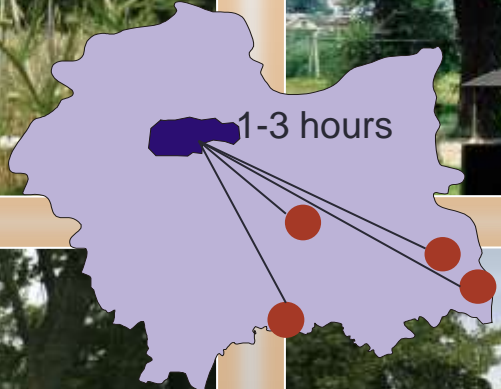
# Wadowice-the birthplace of Pope John Paul II



# Pieskowa Skala Castle



# Wooden architecture treasures





# Tatry Mountains



# Pieniny National Park



# Kraków – the oldest university centre in Poland

33  
institutions  
of higher  
education

about  
208.000  
students

10% of  
overall  
number of  
students in  
Poland



Jagiellonian  
University– the oldest  
university in Poland  
(1364)



AGH University of  
Science and  
Technology



Krakow University  
of Technology



University of  
Economics



Pedagogical  
University



University of  
Agriculture



Pontifical University  
of John Paul II

# Economy in the Małopolska Region (2011)

331 600 enterprises  
(8,5% of the enterprises in Poland)

Outsourcing services centre  
(HAYS, Capgemini, IBM, E&Y, Deloitte, Shell, State Street and others)



**Arcelor Mittal**  
(investments of 1 000 mln USD)



**Philip Morris**  
(investments of 700 mln USD)



**F&P Holding**  
(investments of 500 mln USD)



**T-mobile**  
(investments of about 350 mln USD)



**Carlsberg** (investments of around 350 mln USD)

7,4% of domestic GDP is generated in Małopolska

Average salary  
3.313 PLN  
(790€)

Unemployment rate 9.4%

# Division of public power in Poland

**CENTRAL**

**REGIONAL**

**LOCAL**

- ensuring integrity and sovereignty
- ensuring internal and external security

initiatives for development, life quality and economic competitiveness

basic public services

**STATE**

**REGION  
(VOIVODESHIP)**

**COUNTY**

**MUNICIPALITY**

# Three levels of Polish local administration

**16** regions

**314** counties and  
**65** separate towns  
with rights of a  
county

**2478**  
municipalities



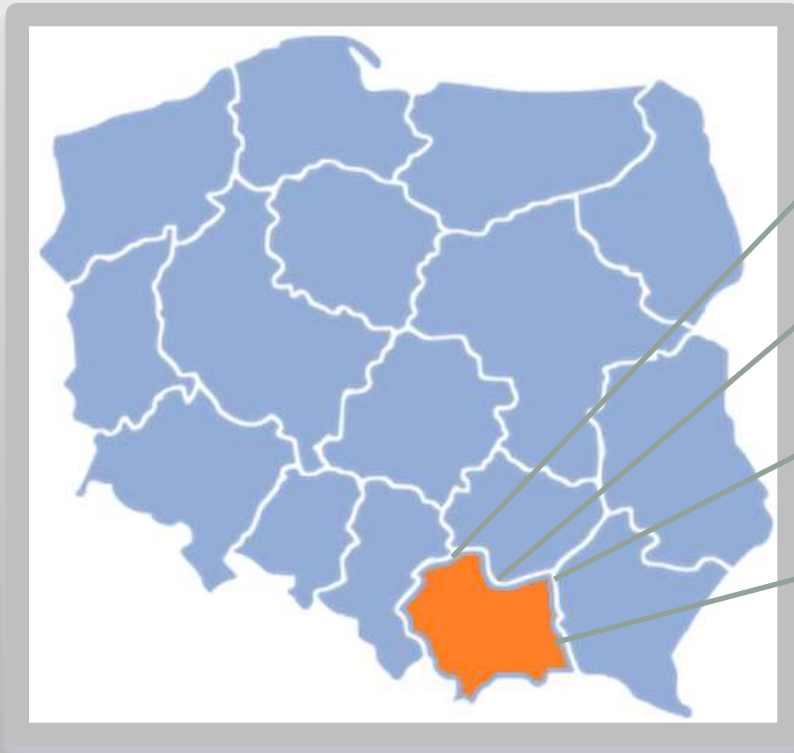
# Administrative division of the Małopolska Region

- 182 municipalities
- 22 counties, including 3 magistrate counties:

**Kraków**

**Nowy Sącz**

**Tarnów**



# Administrative division of the Małopolska Region



Logo



Coat of arms



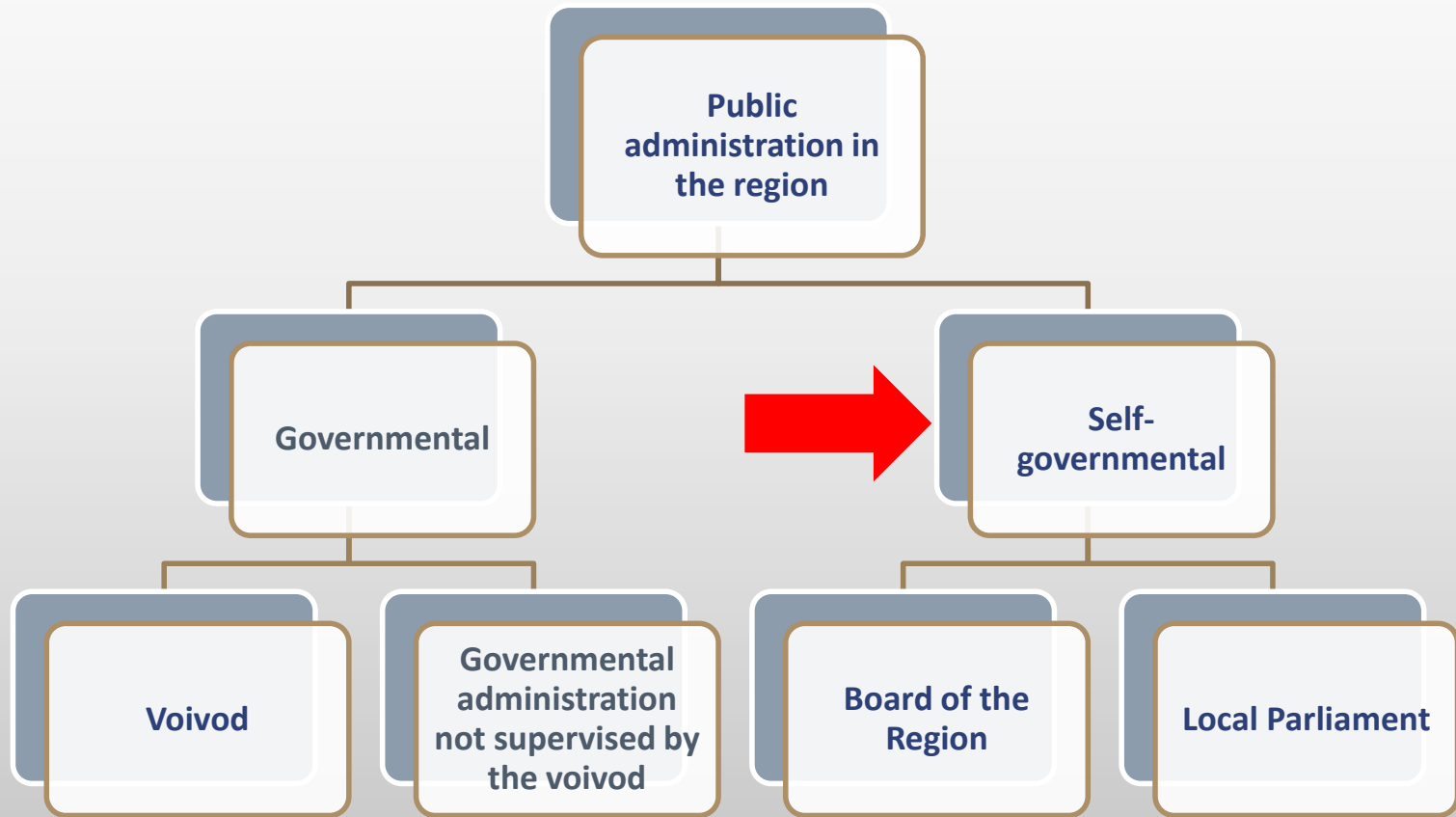
Flag

- territory : 15 144 km<sup>2</sup>  
(5% of the Polish territory)
- 3.3 mln inhabitants  
(8,7% of the Polish population)
- Kraków: about 759 000 inhabitants
- 1 098 116 697 PLN - budget for the year 2013





# Public administration in the region

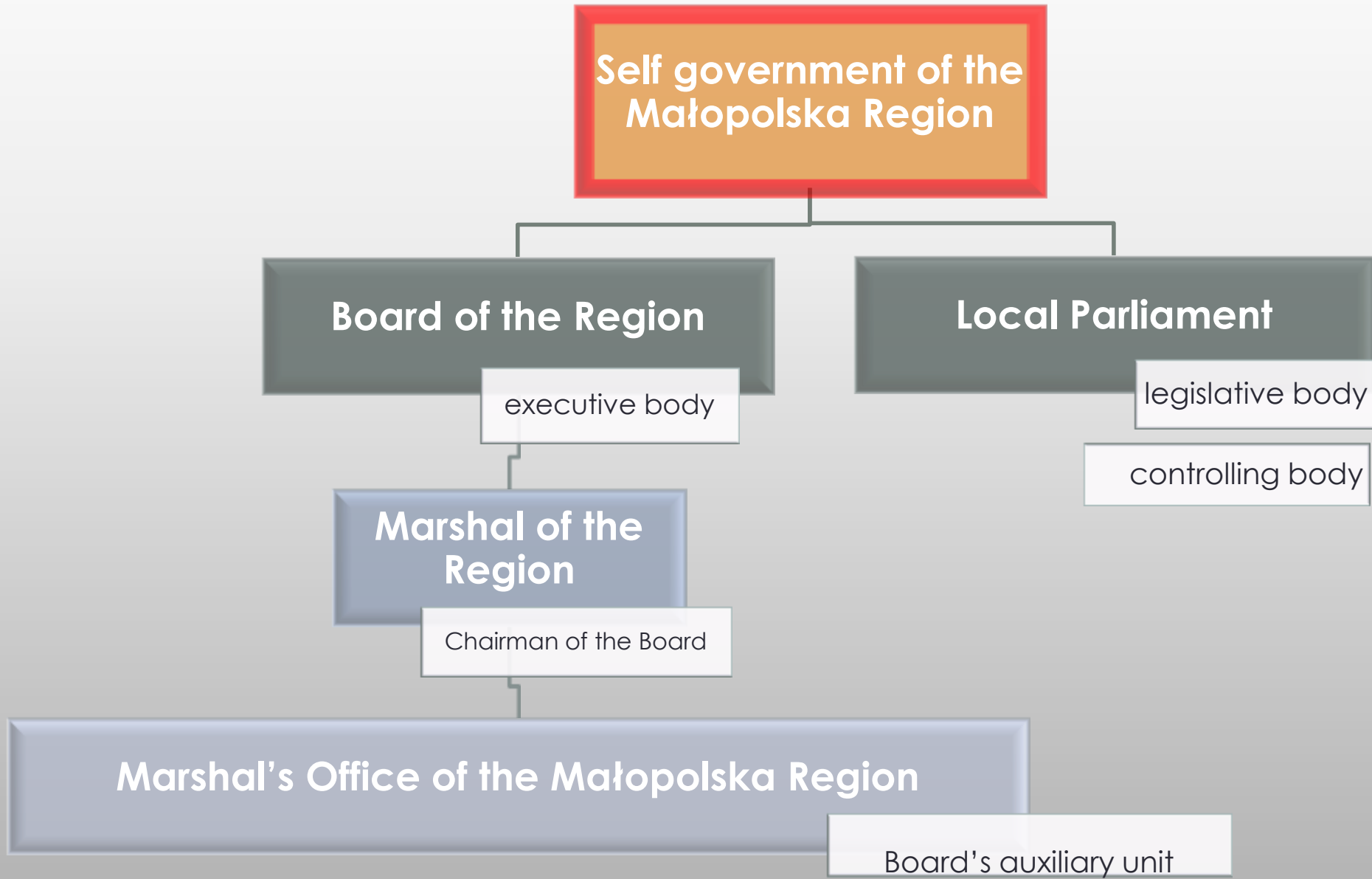


**Małopolska Voivodeship Office**



**Marshal's Office of the Małopolska Region**

# Public administration in the region



# Responsibilities of the Małopolska Region self government

## 1. Adoption of the region's development strategy and action plans for 2011-2020 in the following fields:

- Intellectual Capital and Labour Market
- Regional Innovation Strategy
- Heritage and Leisure Industries
- Transport and Communication
- Rural Areas
- Environment Protection
- Health Care
- Social Inclusion
- Territorial Marketing
- Regional Cooperation

## 2. Implementation of the EU Funds

## 3. Adoption of the spatial development plan for the Małopolska Region

# EU funds in Małopolska

**2007-2013**

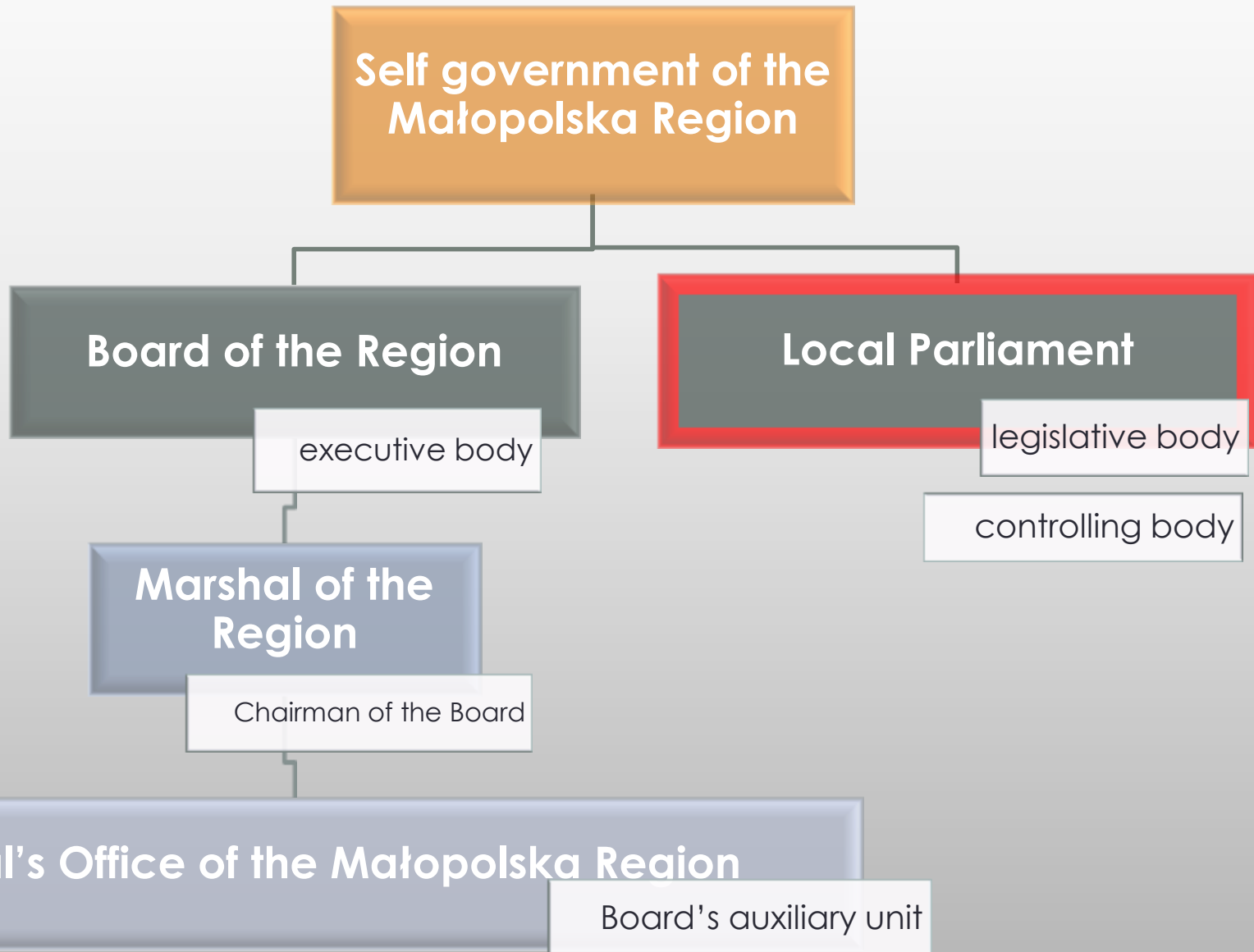
**1 730**  
mln  
euro

- Małopolska Regional Operational Programme
- Human Capital Programme
- Rural Development Programme
- Operational Programme Fisheries
- European Territorial Cooperation Programme

**2014-2020**

**2 580**  
mln  
euro

# Public administration in the region



# Local Parliament

## Chairman



**Kazimierz  
Barczyk**

## Vice-chairmen and vice-chairwoman



**Bogusław  
Mąsior**



**Jacek Soska**

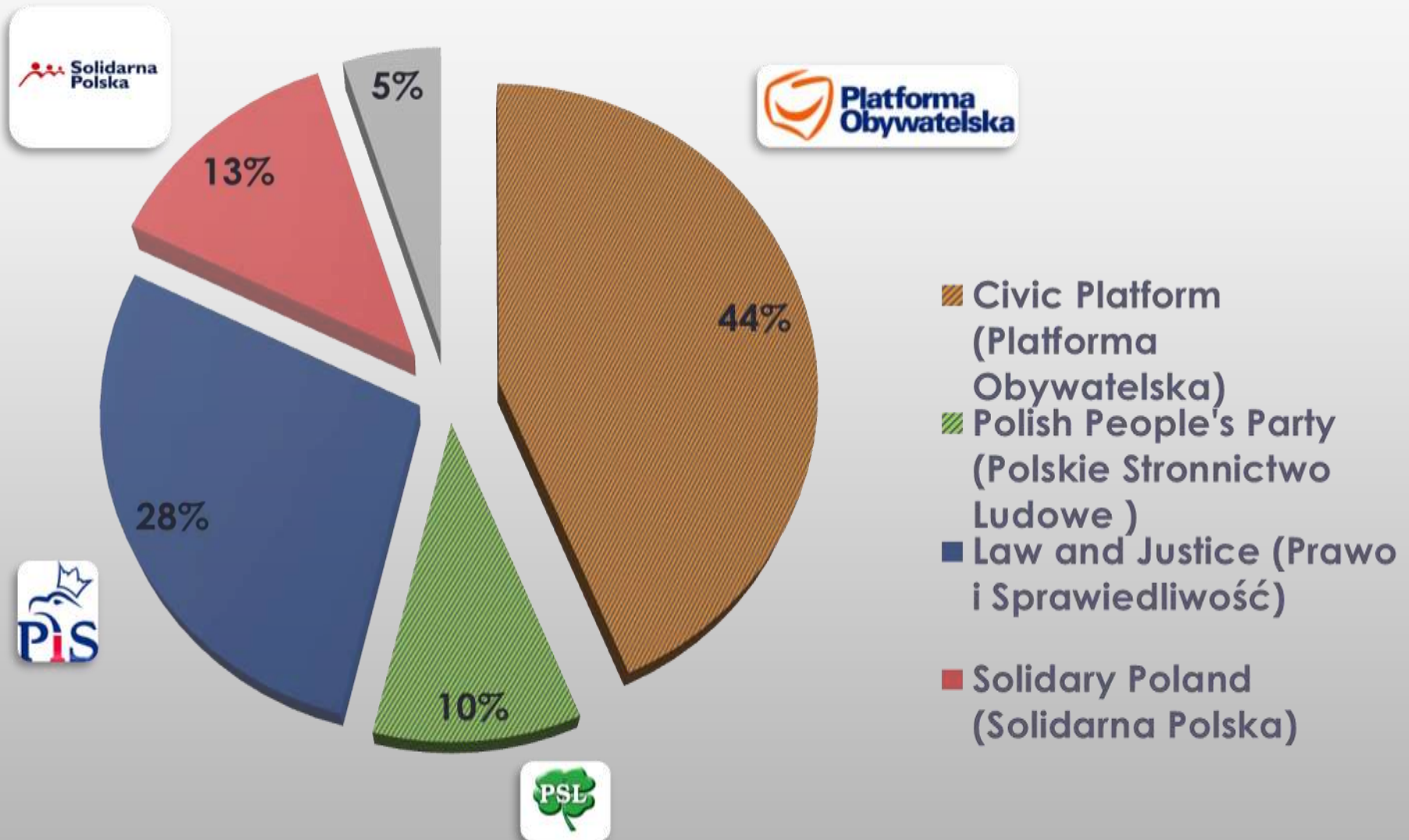


**Renata Godyń-  
Swędzioł**

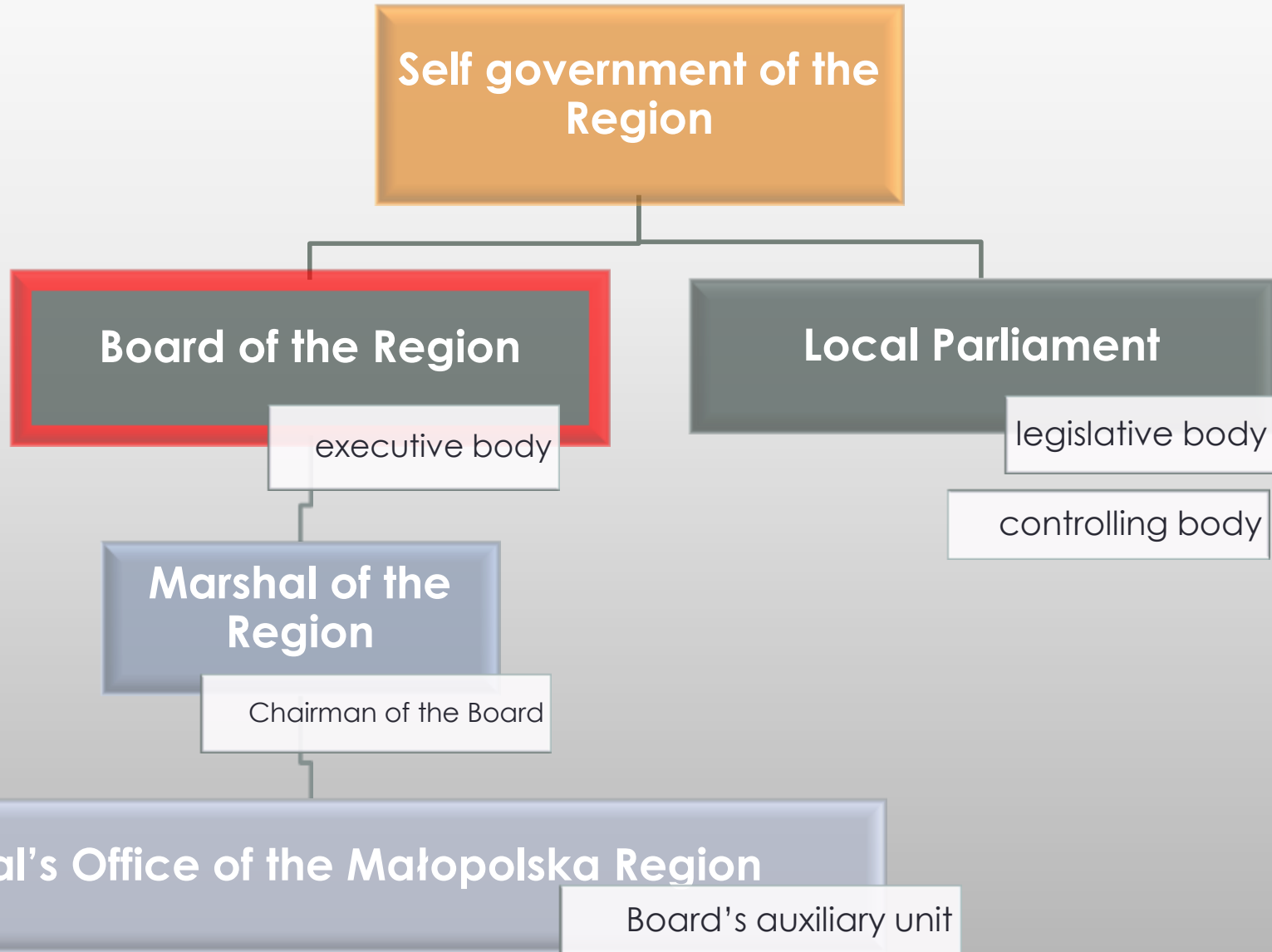
## Councillors (39)

# Local Parliament

## distribution of political forces



# Public administration in the region





# Board of the Region

Marshal of the Małopolska Region



**Marek Sowa**

Vice-marshals



Roman  
Ciepiela



Wojciech  
Kozak

Members of the Board



Stanisław  
Sorys



Jacek  
Krupa

# Competences of the Marshal of the Region

## Marshal of the Region

head of the Board of the Region

represents the region in external relations

manages current affairs of the Region

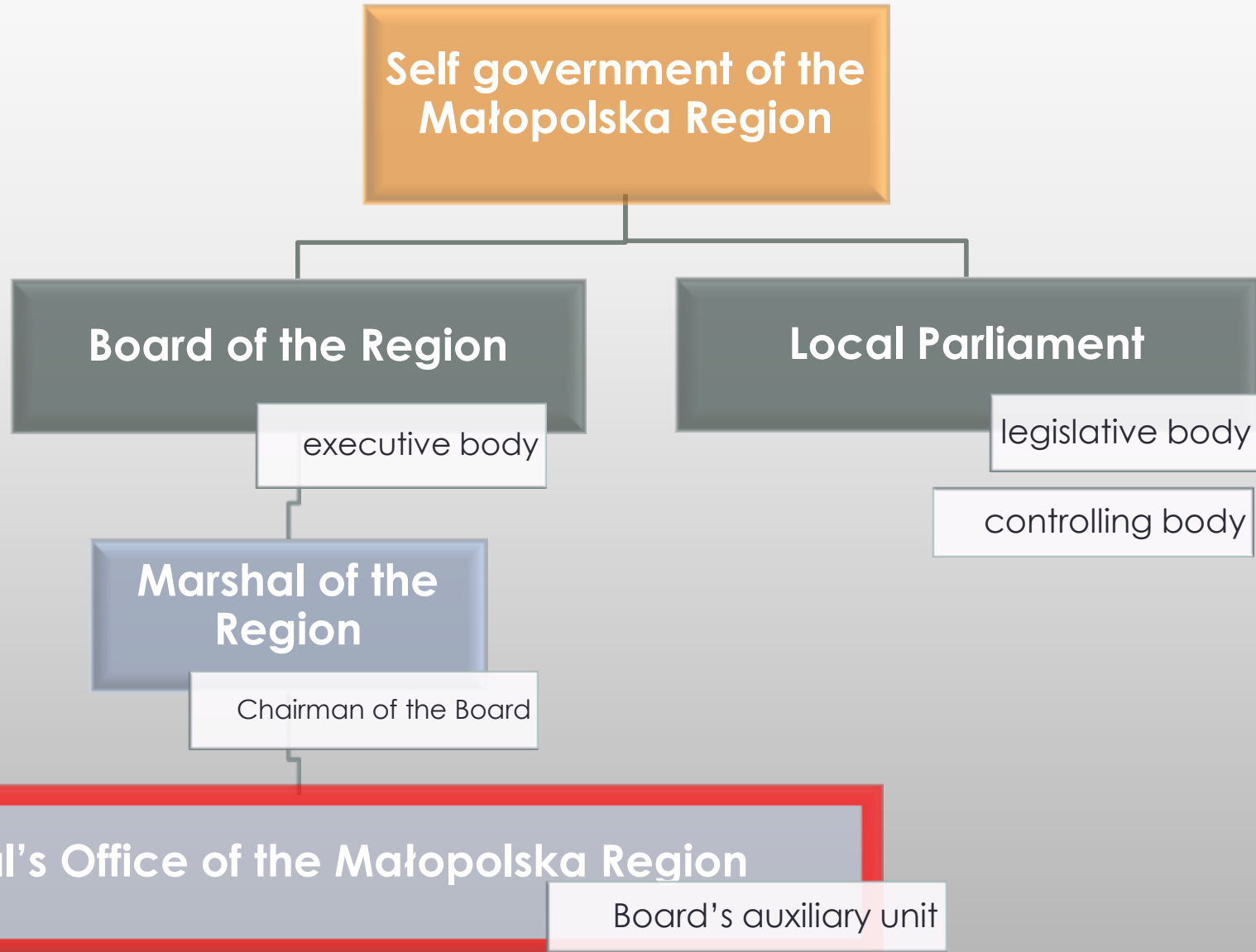
head of the Marshal's Office of the Małopolska Region

fields of direct supervision: controlling, audit, finance

fields of direct supervision: development strategy,  
international cooperation

issues decisions in individual cases

# Public administration in the region



# Marshal's Office of the Małopolska Region

## Who are we?

**96%**

higher  
education

**995**

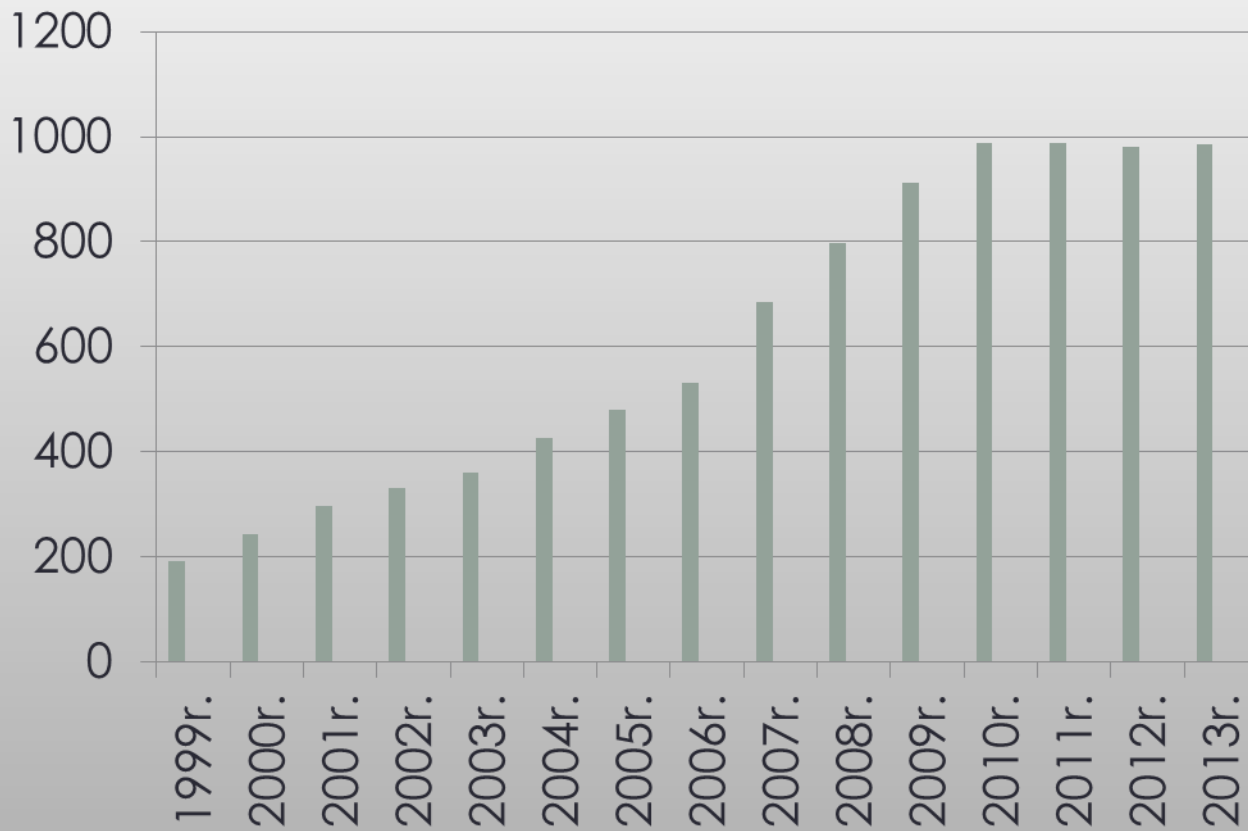
employees

**10** years

average length  
of service

**35** years

average age



■ wydatki budżetowe na  
zatrudnienie



**28%**



**72%**

# Budget



# Budget of the Region

Main source of financing of the activities of the region is **own income**

Main sources of own income for the region:

- share of income from taxes constituting national budget's income
- income from assets of the region

In Małopolska, transparent financial means distribution system has been introduced. It is based on the criteria and rules adopted by the Local Parliament. In case of assistance funds and regional contract the process is supervised by the **regional steering committee**. In other cases, special **commissions and Local Parliament commissions** are involved.

# Budget of the Region

Years	plan for 01.01	execution for 31.12.
<b><u>1999</u></b>	<b>203 046 924</b>	<b>262 285 962</b>
<b>2000</b>	204 973 564	272 327 531
<b>2001</b>	223 924 710	324 763 823
<b>2002</b>	200 775 596	324 130 934
<b>2003</b>	263 889 364	370 723 920
<b>2004</b>	278 275 226	486 119 023
<b>2005</b>	404 600 005	469 719 416
<b>2006</b>	570 567 498	628 256 296
<b>2007</b>	723 948 044	745 982 827
<b>2008</b>	1 165 287 029	930 261 767
<b>2009</b>	1 594 139 063	1 430 237 733
<b>2010</b>	1 299 967 049	1 077 195 531
<b>2011</b>	1 172 072 308	1 315 268 348
<b><u>2012</u></b>	<b>1 232 134 384</b>	<b>1 140 221 392</b>
<b>2013</b>	1 098 116 697	-

# Structure of the budget

	<b>1999</b>	<b>2013</b>
income	<b>203.046.924 PLN</b>	<b>1.098.116.697 PLN</b>
expenditures	<b>203.046.924 PLN</b>	<b>1.201.044.828 PLN</b>
subsidies	<b>2.887.000 PLN</b>	<b>70.764.000 PLN</b>
subvention	<b>84.266.000 PLN</b>	<b>152.656.242 PLN</b>
Income from taxes (PIT,CIT)	<b>42.701.000 PLN</b>	<b>371.220.400 PLN</b>
deficit	<b>0 PLN</b>	<b>102.928.131 PLN</b>



# Cooperation between governmental and self governmental administration

**Governmental  
administration**

**Commisioned tasks**

**Self  
governmental  
administration**

**subsidies**

- **Commisioned tasks - tasks of central governments performed by self government units**
- **Objective - Implementation of the projects on the local level**
- **Self government administration receives financial means (subsidies) from the voivod for the commisioned tasks to be implemented**
- **Commision is of statutory and obligatory nature**

# We invite you to visit our websites:

---

- [www.malopolskie.pl](http://www.malopolskie.pl)
- [www.wrotamalopolski.pl](http://www.wrotamalopolski.pl)
- [www.facebook.com/wojewodztwomalopolskie](http://www.facebook.com/wojewodztwomalopolskie)

