

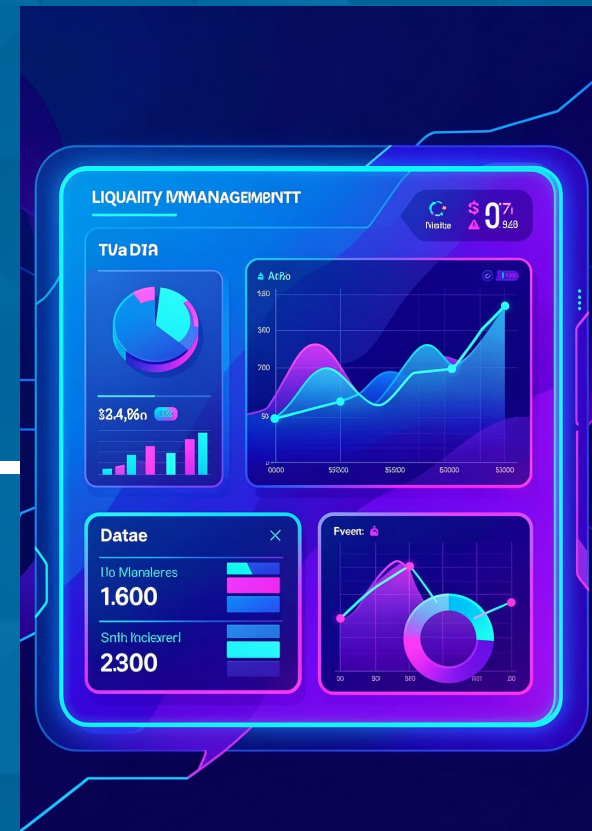
Leveraging IT and Data Supporting Cash Management & Forecasting

Presentation for Small Group Discussion

Turkmenistan

Anvar Muzafarov

Joint Meeting of TCOP Cash Management and Forecasting & IT Working Groups
Bucharest, Romania. February 18, 2026



1. Current Approach to Cash Flow Forecasting



❑ Scope & coverage of cash flow forecasts:

- ❑ Forecast of TSA Balance
- ❑ Real-time monitoring of receipts and payments
- ❑ Preventing cash-flow gaps

❑ Forecast granularity

- ❑ Short-term forecast: daily/ for 7-14 days
- ❑ Medium-term forecast: 1-3 months

❑ Main aggregates forecasted:

- ❑ Cash balance (bank's data)
- ❑ Revenue (Tax service data)
- ❑ Planned expenditure (payment requests in TMS)
- ❑ Executed payments

❑ Forecast update/rollover frequency

- ❑ Daily update
- ❑ Operative update based on the change in status of payments

2. Data & Models Used for Cash Flow Forecasting



□ Data used for cash forecasting:

- Payment requests (payroll, etc.) – TMS
- Cash balance – bank
- Revenues – tax system

□ Data sources:

- TMS (internal treasury system)
- Bank system
- Tax information system

□ Where is data stored?

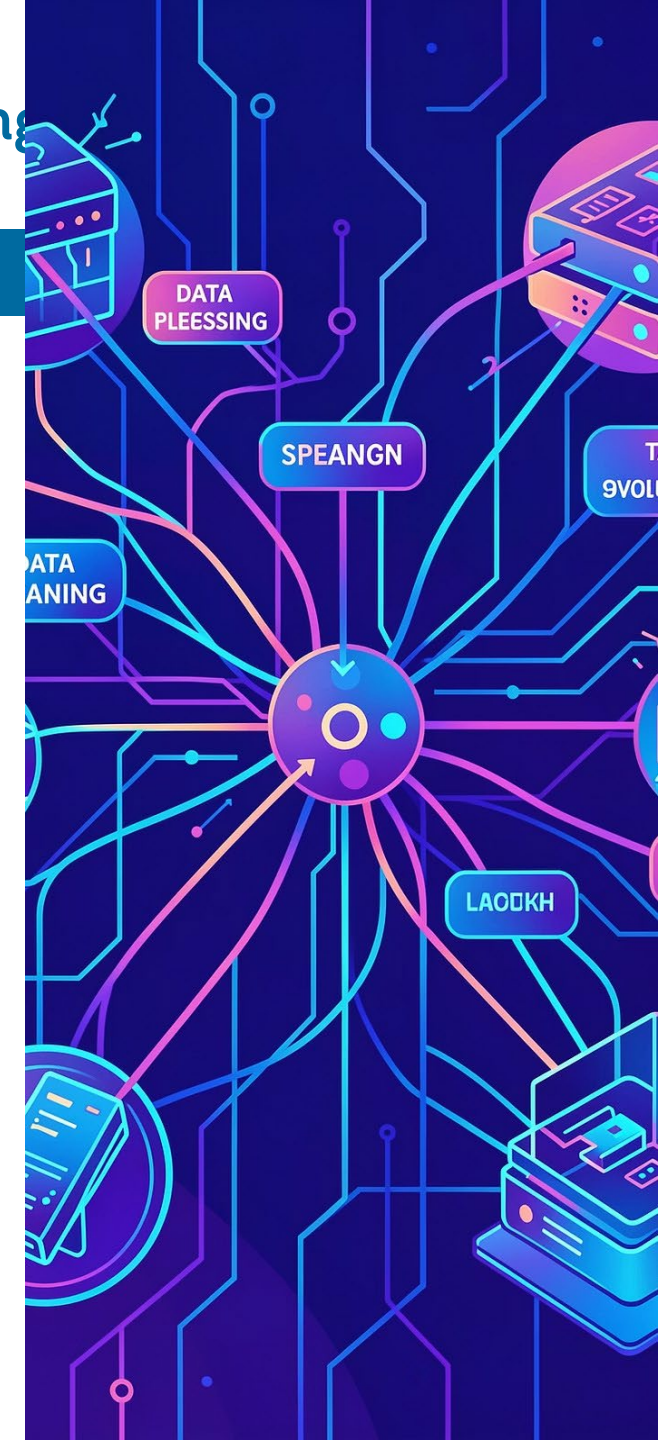
- Central TMS database
- Integration services with other systems

□ Does the data need cleaning/adjustment?

- reconciliation and comparison of data from different systems
- checking the correctness of classifiers and statuses

□ Software and approach to cash forecasting

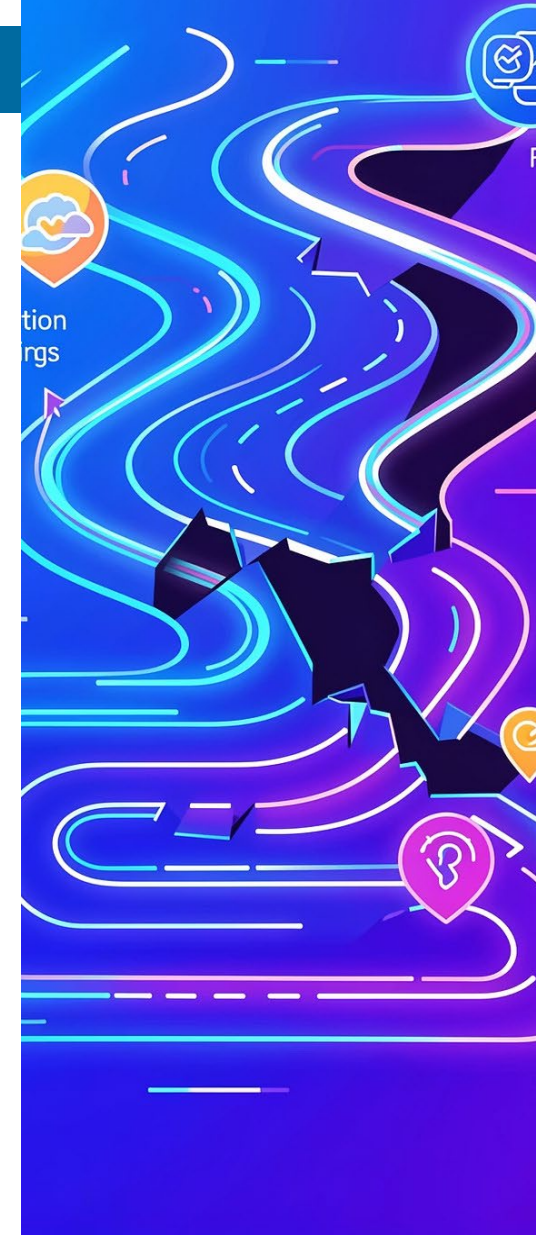
- use of real-time operational data
- Forming a schedule for future payments
- Comparison of planned and actual indicators



3. Future Plans & Challenges



- **Areas for improvement**
 - Improving data quality and completeness
 - Using additional data sources
 - Using more accurate forecasting methods
- **Automation plans**
 - Developing analytical dashboards
 - Automatic identification of cash gaps
 - Deeper integration with other government systems
- **Using modern IT**
 - Using data analytics
 - Possible use of AI for revenue and expenditure forecasting
- **Key Challenges**
 - heterogeneity of data from different systems
 - Lags in data updates
 - Need for better synchronization of the systems



THANK YOU!

